

Component Replacement - electrical -



Xperia™ M4 Aqua

E2303, E2306, E2312, E2333, E2353, E2363

CONTENTS

1	Replaceable Components	3
2	Component Placing.....	5
3	Additional Repair info	6
4	Revision History	11

For general information about electrical repair related issues, refer to 1220-1336: Generic Repair Manual - electrical

Baking prior to repair is required, if the board have been exposed to air more than 12 hours from PWB package opening. Too long exposure time increase the level of moisture in PWB and the PWB could delaminate during repair process and result in direct or latent failures and reduce reliability.

The boards shall be baked in 125°C ±5°C for 4 hours.

Test after electrical replacement: refer to 1273-1772 Mechanical Test Instruction

All Electrical components are RLC level B, Reversed Logistic Classification, See the Spare Part Handling chapter in Mechanical/Generic Repair Manual 1220-1333.

Do not remove shield can lids (Heat pasta are added and RF performance will be damaged)

1 Replaceable Components

EXPLANATION OF ABBREVIATIONS USED IN THE COLUMN 'COMMENTS' BELOW

COMPONENT LOCATION

P = Primary side

S = Secondary side

REPAIR METHOD

HA = Hot Air (removal & mounting)

ST = Soldering Tool (removal & mounting)

HA/ST = Hot Air for removal - Soldering Tool for mounting

BGA = BGA Station

BH = Bottom Heater

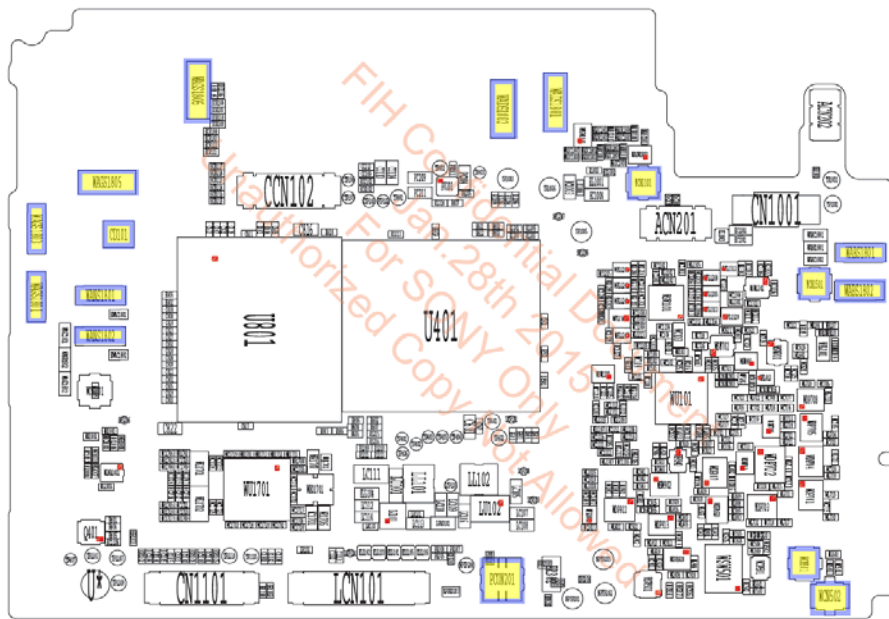
ADDITIONAL INFORMATION

⇒1 (2,3,4, etc.) = Proceed to 'Additional Repair Info' for further instructions in the indicated section(s).

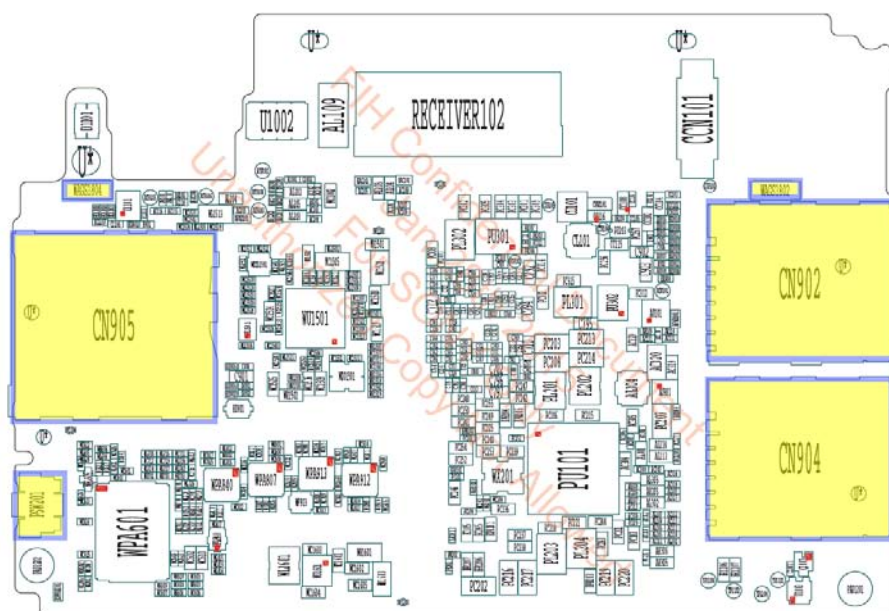
Position	Component	Part no.	Comments
CD101	LED LAMP LXCL-PWF4-9011(3xA4.3xA5) White	60009011E7K	P HA+BH ⇒1
CN902	SIM Socket	F63012015007	S HA+BH or BGA ⇒2
CN904	SIM Socket	F63012015007	S HA+BH or BGA ⇒3
CN905	Memory Socket	6301900C008	S HA+BH or BGA ⇒4
PCON201	Battery Connector	620G00E5004	P HA+BH ⇒5
PSW201	Switch Connector	6304200O002	S HA+BH ⇒6
WABS1801	Spring Connector 3.26mm*1.15mm	440TUL0060A	P HA+BH ⇒7
WABS1802	Spring Connector 3.26mm*1.15mm	440TUL0060A	P HA+BH ⇒7
WADS1801	Spring Connector 3.8mm*1.1mm	440TUL0160A	P HA+BH ⇒8
WADS1802	Spring Connector 3.8mm*1.1mm	440TUL0160A	P HA+BH ⇒8
WAGS1801	Spring Connector 3.26mm*1.15mm	440TUL0060A	P HA+BH ⇒9
WAGS1802	Spring Connector 3.26mm*1.15mm	440TUL0060A	S HA+BH ⇒10
WAGS1803	Spring Connector 3.26mm*1.15mm	440TUL0060A	P HA+BH ⇒9
WAGS1804	Spring Connector 3.26mm*1.15mm	440TUL0060A	S HA+BH ⇒11
WAGS1805	Spring Connector 3.8mm*1.1mm	440TUL0160A	P HA+BH ⇒12
WAGS1806	Spring Connector 3.8mm*1.1mm	440TUL0160A	P HA+BH ⇒13
WANS1801	Spring Connector 3.26mm*1.15mm	440TUL0060A	P HA+BH ⇒14
WANS1802	Spring Connector 3.26mm*1.15mm	440TUL0060A	P HA+BH ⇒14
WCN501	RF Switch	620F00B0004	P HA+BH ⇒15
WCN502	RF Connector,W.FL2-R-SMT-1 (80)	620F009J001	P HA+BH ⇒16
WCN1101	RF Switch	620F00B0004	P HA+BH ⇒17
WCN1501	RF Switch	620F00B0004	P HA+BH ⇒18

2 Component Placing

To access the Component Placing document, double-click the icon below.
Applicable for on-screen viewing only – icon not shown on hard-copies.



Primary side



Secondary side

3 Additional Repair info

1

CD101

Replace if Flash LED not working.

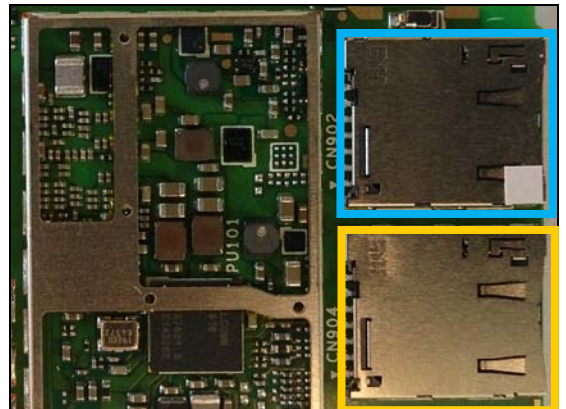


2

CN902

Replace if mechanical damaged (No network, restart, No SIM1 card inserted)

Protect the SIM2 connector with capton tape!

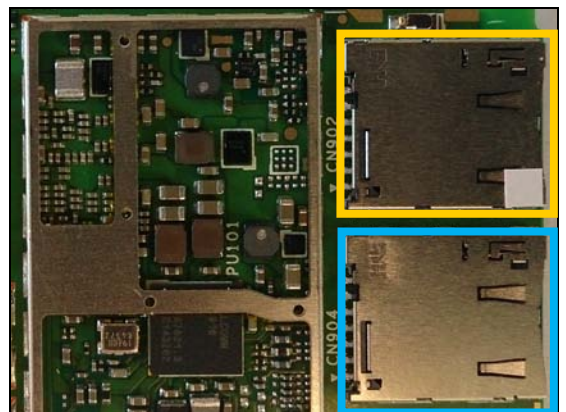


3

CN904

Replace if mechanical damaged (No network, restart, No SIM2 card inserted)

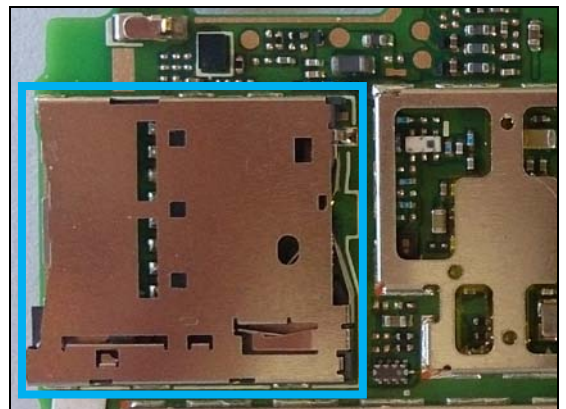
Protect the SIM1 connector with capton tape!



4

CN905

Replace if mechanical damaged (No SD card)



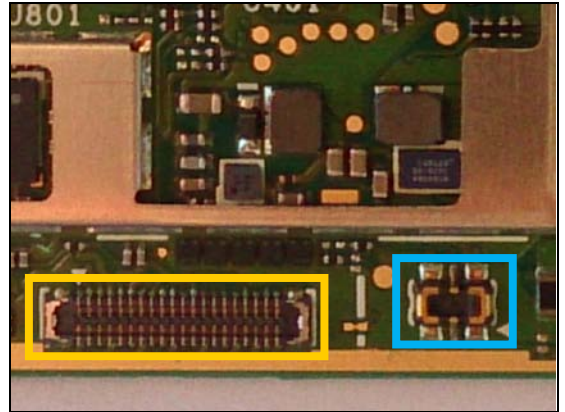
Repair Actions: Additional Repair Info

5

PCON201

Replace if mechanical damaged. (Phone dead or power off)

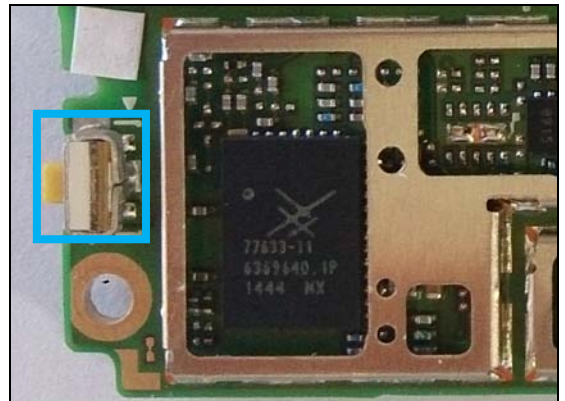
Protect the BtB connector with capton tape!



6

PSW201

Replace if mechanical damaged. (Reset not working)

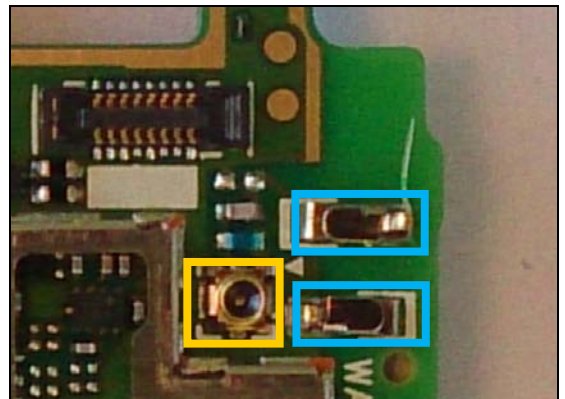


7

WABS1801, WABS1802

Replace if mechanical damaged. (No or bad WLAN / BT)

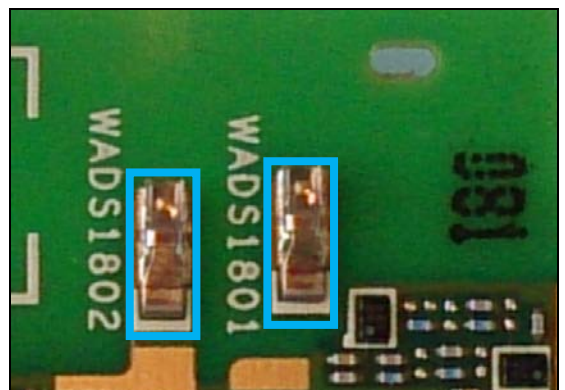
Protect the RF connector with capton tape!



8

WADS1801, WADS1802

Replace if mechanical damaged (No or bad network, diversity antenna)



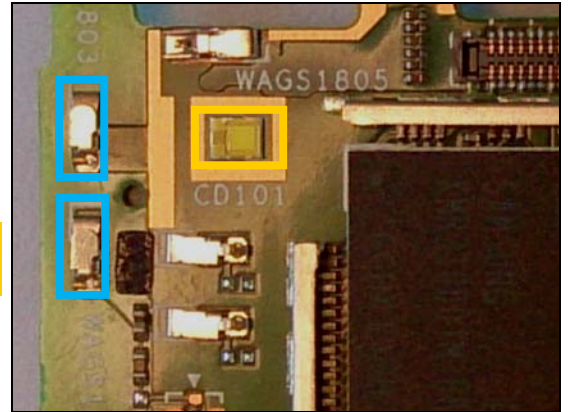
Repair Actions: Additional Repair Info

9

WAGS1801, WAGS1803

Replace if mechanical damaged. (No or bad GPS)

Protect the Flash LED with capton tape!

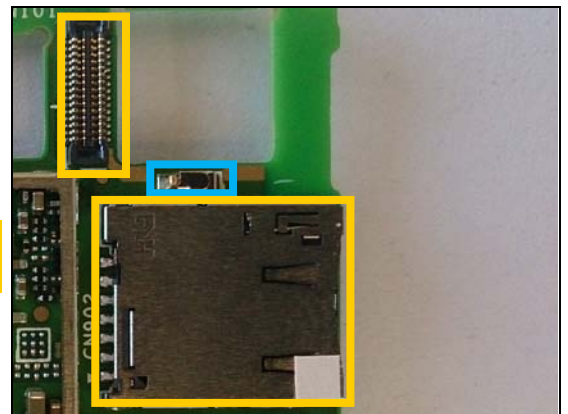


10

WAGS1802

Replace if mechanical damaged. GND Contact.

Protect the BtB and SIM1 connectors with capton tape!

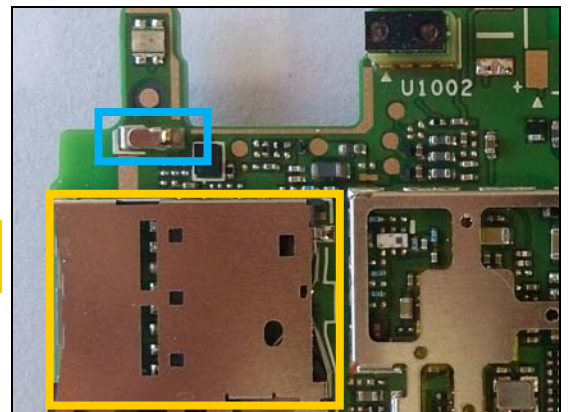


11

WAGS1804

Replace if mechanical damaged. GND Contact.

Protect the SD connector with capton tape!

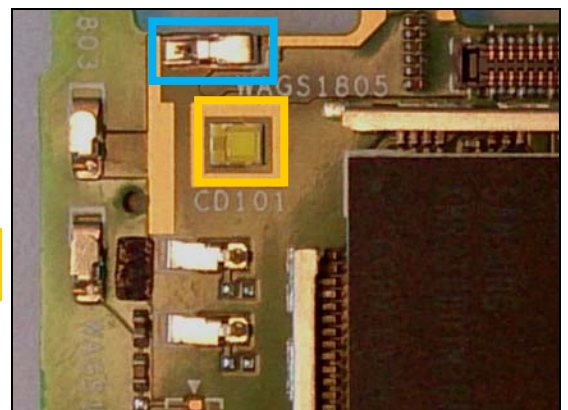


12

WAGS1805

Replace if mechanical damaged. GND Contact.

Protect the Flash LED with capton tape!

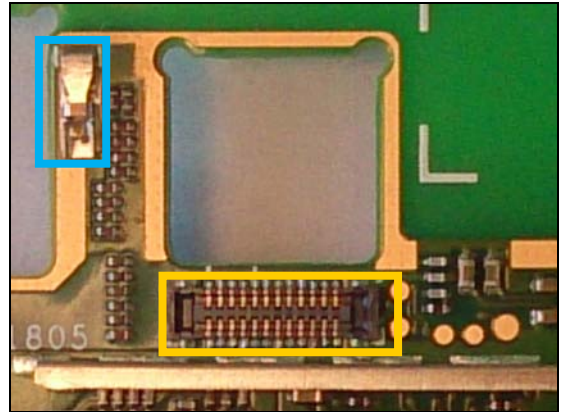


Repair Actions: Additional Repair Info

13

WAGS1806

***Replace if mechanical damaged. GND Contact.
Protect the BtB connector with capton tape!***



14

WANS1801, WANS1802

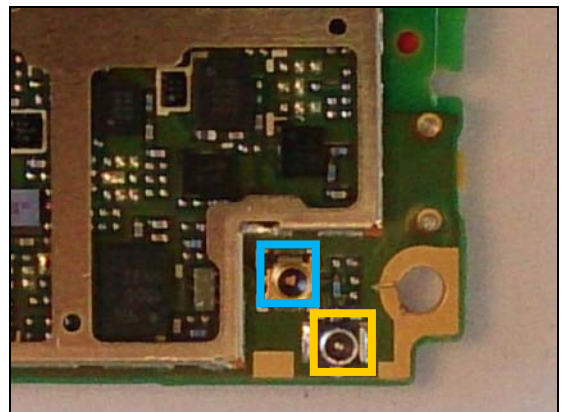
***Replace if mechanical damaged (No or bad NFC)
Protect the Flash LED with capton tape!***



15

WCN501

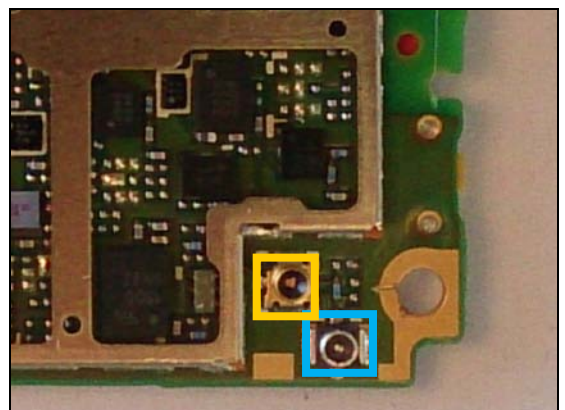
***Replace if open circuit 1-2 (No or bad network, main antenna)
Protect the RF connector with capton tape!***



16

WCN502

***Replace if mechanical damaged (No or bad network, main antenna)
Protect the RF connector with capton tape!***



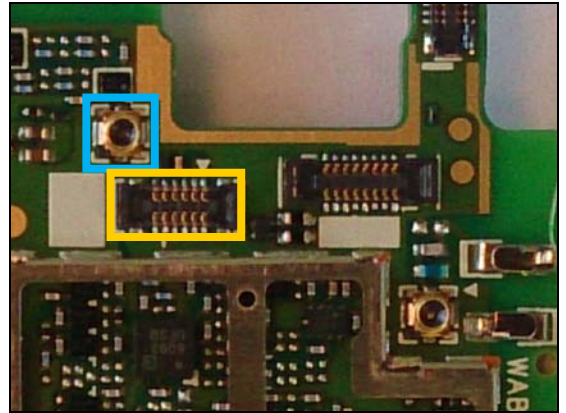
Repair Actions: Additional Repair Info

17

WCN1101

Replace if open circuit 1-2. (No or bad network, diversity antenna)

Protect the BtB connector with capton tape!

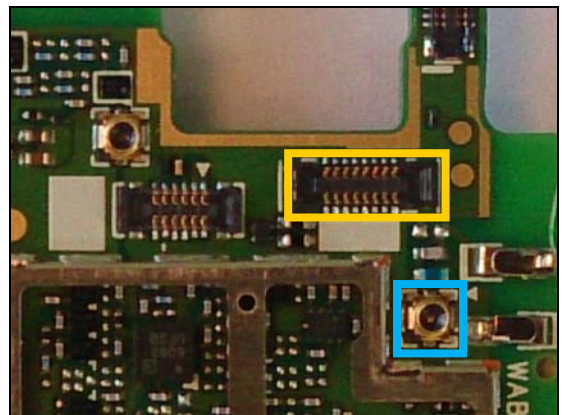


18

WCN1501

Replace if open circuit 1-2. (No or bad WLAN / BT)

Protect the BtB connector with capton tape!



4 Revision History

Rev.	Date	Changes / Comments
1	2015-05-04	Initial release